

# RIDE SMART

SHARE THIS [f](#) [t](#) [g+](#) [in](#) [✉](#)

## TEACHING BICYCLING SKILLS AND BUILDING CONFIDENCE TO RIDE

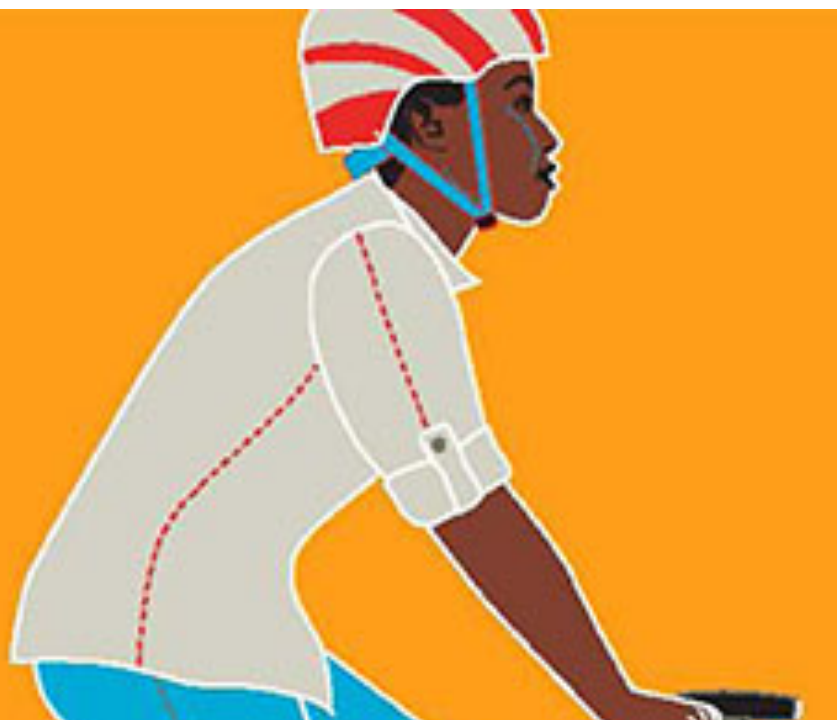
Education has been a core activity of the League's since the 1970's. Virtually every state and local bicycling education program can trace its roots directly back to the League's program. This core content is designed to reach people of all ages and abilities, improving skills, building confidence, and teaching others.

### THE EVOLUTION OF THE PROGRAM

The Smart Cycling program was known for many years simply as BikeEd, with classes named Road I, Road II, Kids I, Kids II etc.; names that you may still hear in use today.

The League's education program offers the only nationwide bicycling instructor certification program.

# BUY QUICK GUIDES



*Education*

## SMART CYCLING STORE

Help spread this important work by [buying Quick Guides](#) to share in the classroom, on the road or in your office. [Click here to preview.](#)

**LEARN MORE »**



*Education*

## SMART CYCLING TIPS

These tip sheets will help you learn more about how to ride safely and perform maintenance on your bike.

**LEARN MORE »**



*Education*

## SMART CYCLING VIDEOS

Are you interested in riding, but could use a little more information to help boost your confidence? Our education videos are a great place to start!

[LEARN MORE »](#)



*Education*

## FIND A CLASS

Smart Cycling classes will not only give you confidence to ride, but connect you with other bicyclists and advocates in your area.

[LEARN MORE »](#)

**PROGRAMS**

Advocacy Advance  
Bicycle Friendly  
America  
Equity Initiative  
Making Biking Better  
National Bike Month  
National Bike Summit  
Ride Smart  
Women Bike

**INFORMATION**

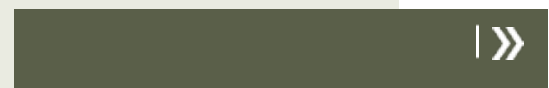
E-News  
Bike Laws  
Media/News  
Policy/Reports

**CONNECT**

Home  
Donate  
Join/Renew  
Store  
BFA Login  
LCI Login

**SUBSCRIBE**

Sign up to receive our e-  
news in your inbox



---

*Copyright 2000-2015, League of American Wheelmen, Inc., 1612 K Street NW, Suite 308, Washington, DC 20006, 202-822-1333. The League is a 501(c)(3) organization.*

LEAGUE OF AMERICAN BICYCLISTS®, NATIONAL BIKE SUMMIT®, BIKE LEAGUE™, BICYCLE FRIENDLY™, BICYCLE FRIENDLY AMERICA™, BICYCLE FRIENDLY STATE™, BICYCLE FRIENDLY COMMUNITY™, BICYCLE FRIENDLY BUSINESS™, BICYCLE FRIENDLY UNIVERSITY™, AND BF™, BFA™, BFS™, BFC™, BFB™ AND BFB™ ARE SERVICE MARKS OF LEAGUE OF AMERICAN WHEELMEN, INC.DBA LEAGUE OF AMERICAN BICYCLISTS. ALL RIGHTS RESERVED. SEE OUR [PRIVACY POLICY](#).

*Site design by [Language Dept.](#) Development by [radicalDESIGNS](#).*