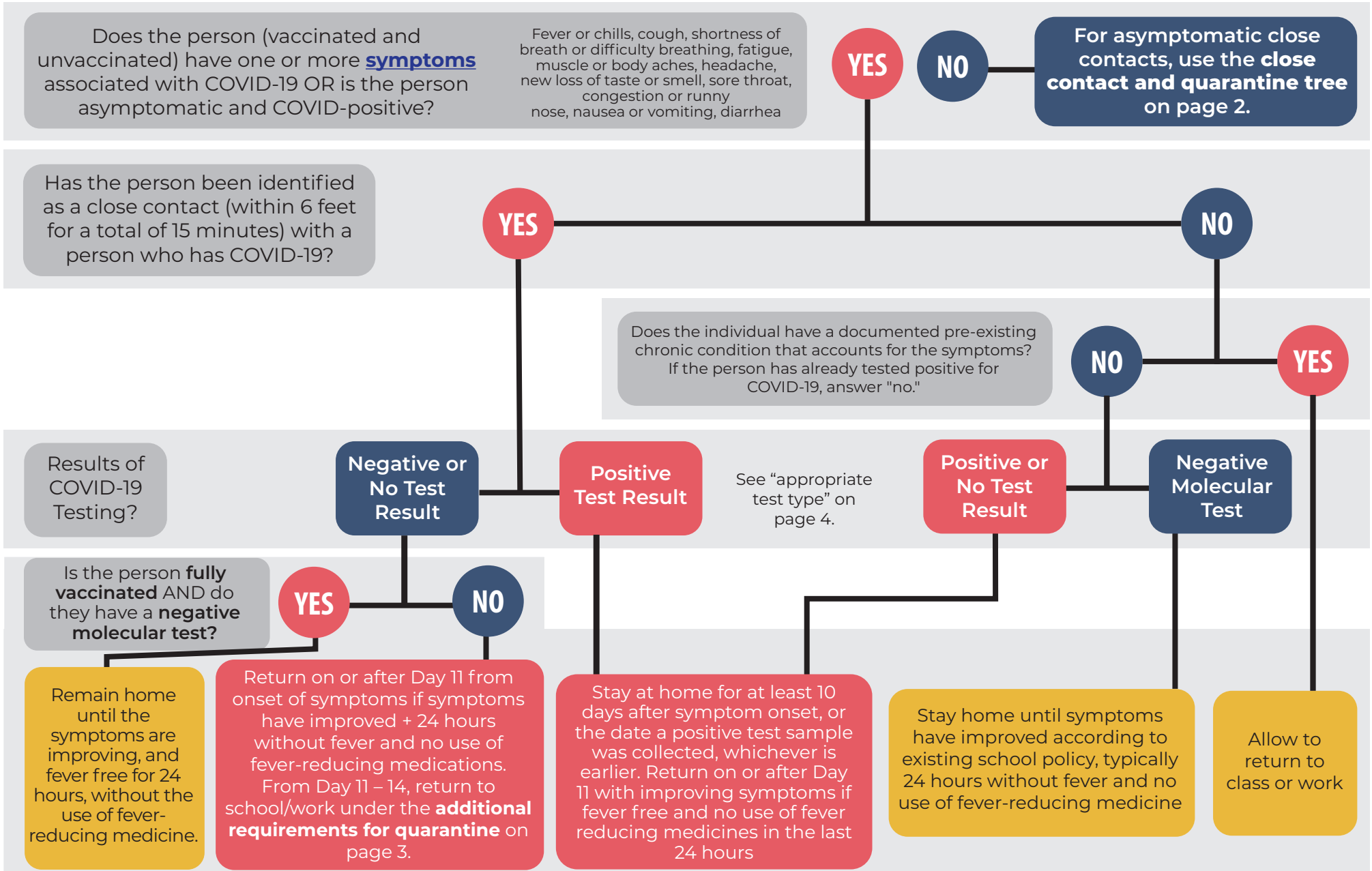


Symptom and Isolation Tree

When a school becomes aware of a positive case on campus, the district/school liaison must contact public health at 888-950-9905 to report the case. For questions on exposures, symptoms, or other related questions, call the Epidemiology School Line at 619-692-8636 and leave a message.



Close Contact and Quarantine Tree

Is the person fully vaccinated OR have they recovered from COVID-19 within the last 90 days with evidence of lab-confirmed diagnosis?

YES

Allow to remain in school or work. Quarantine is not required. Recommend that the person test on Day 3, 4, or 5.

NO

Use the following decision trees for adults or students as appropriate.



ADULTS (non-students)

STUDENTS

Does the employee's role require them to be near individuals who are immunosuppressed?

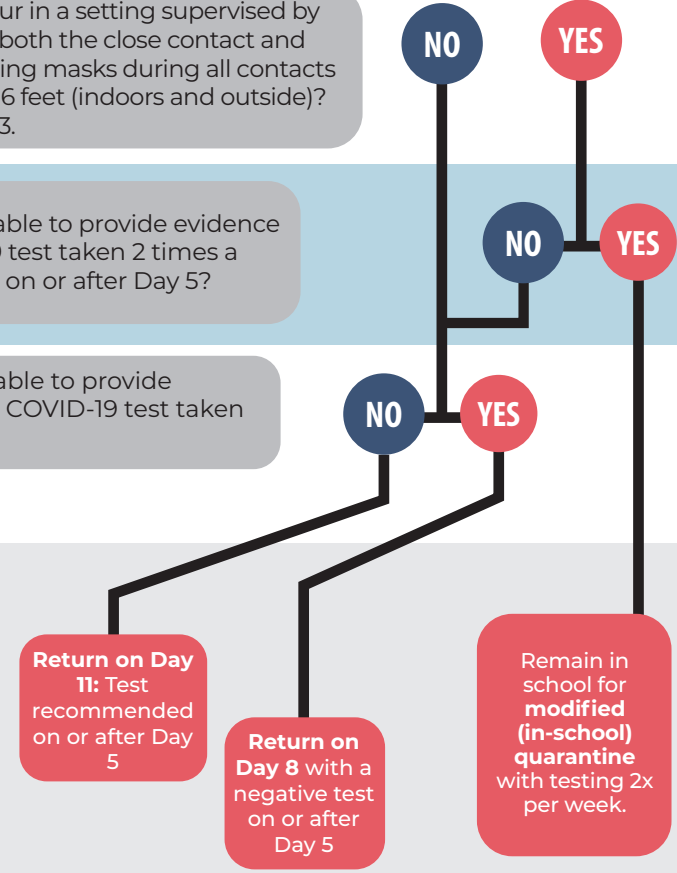
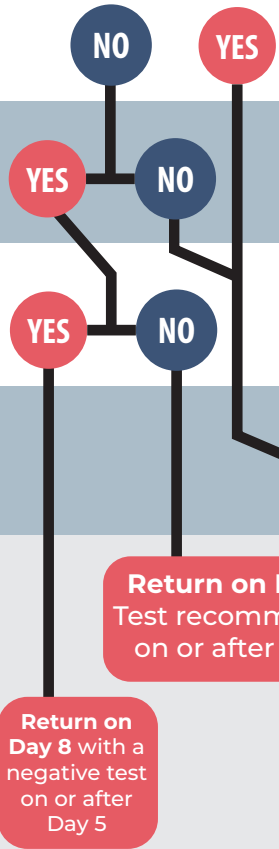
1. Did the exposure occur in a setting supervised by school staff, AND were both the close contact and COVID-19 positive wearing masks during all contacts with each other within 6 feet (indoors and outside)? If "no" skip to question 3.

Can the employee self-monitor for symptoms, distance at 6 feet, wear a mask, and sanitize hands at work through day 14?

2. Will the student be able to provide evidence of a negative COVID-19 test taken 2 times a week with the last test on or after Day 5?

Will the employee be able to provide evidence of a negative COVID-19 test taken on day 5 or later?

3. Will the student be able to provide evidence of a negative COVID-19 test taken on day 5 or later?



Return to school or work before Day 15 includes **additional requirements** (see page 3). If these requirements cannot or will not be met, return on Day 15 is required.

Antigen tests administered on-site may be used for asymptomatic testing when required for quarantine.

Addendum on Quarantine

Quarantine or isolation: What's the difference?

- Quarantine keeps someone who might have been exposed to the virus away from others.
- Isolation keeps someone who is infected with the virus away from others, even in their home.

Who needs to quarantine?

- People who have been in **close contact** with someone who has COVID-19 — excluding people who have had COVID-19 within the past three months or **who are fully vaccinated**.
- People who have tested positive for COVID-19 within the past three months and recovered do not have to quarantine or get tested again as long as they do not develop new symptoms.
 - People who develop symptoms again within three months of their first bout of COVID-19 should follow their doctor's advice on testing.
- People who have been in close contact with someone who has COVID-19 are not required to quarantine if they have been **fully vaccinated** against the disease and show no symptoms.

What counts as close contact?

- Being within 6 feet of someone who has COVID-19 for a total of 15 minutes or more over a 24-hour period
- Providing care at home to someone who is sick with COVID-19
- Having direct physical contact with the person (hugged or kissed them)
- Sharing eating or drinking utensils
- Being sneezed on, coughed on, or somehow getting respiratory droplets on you from someone with COVID-19

Additional requirements for quarantine for return to school or work before completing 14 days of quarantine:

- The number of days required for quarantine is counted from the day after the person's last close contact with a person who is contagious with COVID-19.
- People are contagious from 2 days before symptoms begin or positive test result, whichever is earlier, until 10 days after.
- If symptoms occur, the individual should immediately self-isolate and contact their health care provider or San Diego County Public Health Services and seek testing.

ADULTS (non-students)

Return on Day 15: No additional requirements.

Return on Day 11: May return if the individual is able to abide by the additional requirements described below.

Return on Day 8: Provide evidence that a diagnostic specimen collected on or after Day 5 (from the date of last exposure) is negative.

Additional Requirements: In addition, for return before Day 14, the employee must agree to self monitor for symptoms, maintain 6 feet of physical distancing at all times, and wear a face covering over their nose and mouth as required. If these requirements cannot or will not be met, 14-day quarantine is required. Staff members who would be near others who have severe immunosuppressive disorder (e.g., bone marrow or solid organ transplant, chemotherapy) must quarantine for 14 days.

***NOTE:** In consultation with the CDPH and Cal/OSHA, the County of San Diego has authorized the 7-day quarantine option (return on day 8) for use by school employees.

STUDENTS

Return on Day 11: Testing on or after Day 5 is recommended but not required. This option may be used with students exposed in any setting.

Return on Day 8: Provide evidence that a diagnostic specimen collected on or after Day 5 (from the date of last exposure) is negative. This option may be used with students exposed in any setting.

Modified Quarantine (remain in school): Remain in school with twice weekly testing. Student must quarantine from all before-school, after-school and weekend activities, and may resume these activities on Day 8 with evidence of a negative test sample collected on or after Day 5. This option may only be used for school setting exposures when the COVID-19 positive person and student close contact were both wearing masks during all contacts with each other within 6 feet, indoors, and outside.

Additional Requirements for the three options listed above: The student must continue daily self-monitoring for symptoms, AND follow all recommended non-pharmaceutical interventions (e.g., wearing a mask indoors, hand washing, avoiding crowds) through Day 14 from last known exposure. Mask use outdoors is also encouraged. If these requirements cannot or will not be met, 14-day quarantine is required.

Addendum on Test Types

Appropriate Test Types:

Molecular Tests

- Lab-based PCR
- Rapid molecular tests (PCR-like)

Antigen Tests

- If symptomatic, a negative antigen test requires molecular test (PCR, LAMP, NAAT) confirmation and individuals should isolate until test results are available.
- If asymptomatic, a positive test requires a confirmation with a molecular test (PCR, LAMP, NAAT) and individuals should isolate until confirmatory test results are available.
- At-home tests cannot be used to satisfy the testing required for quarantine, or for state-mandated testing of employees who have not provided evidence of full vaccination. Tests must be administered by a clinic, lab, or properly trained school employees working under agreement with an ordering physician.

Onsite Rapid Tests

- When a point of care test (school administered antigen test or rapid molecular test like the Cue) is used for a **person in quarantine who develops symptoms**, the results must be confirmed with a laboratory-based PCR test.



Populations Tested:

- Staff or students with symptoms, regardless of vaccination status
- Unvaccinated students who are close contacts to remain in school for a modified quarantine as described in **CDPH K-12 Guidance**.